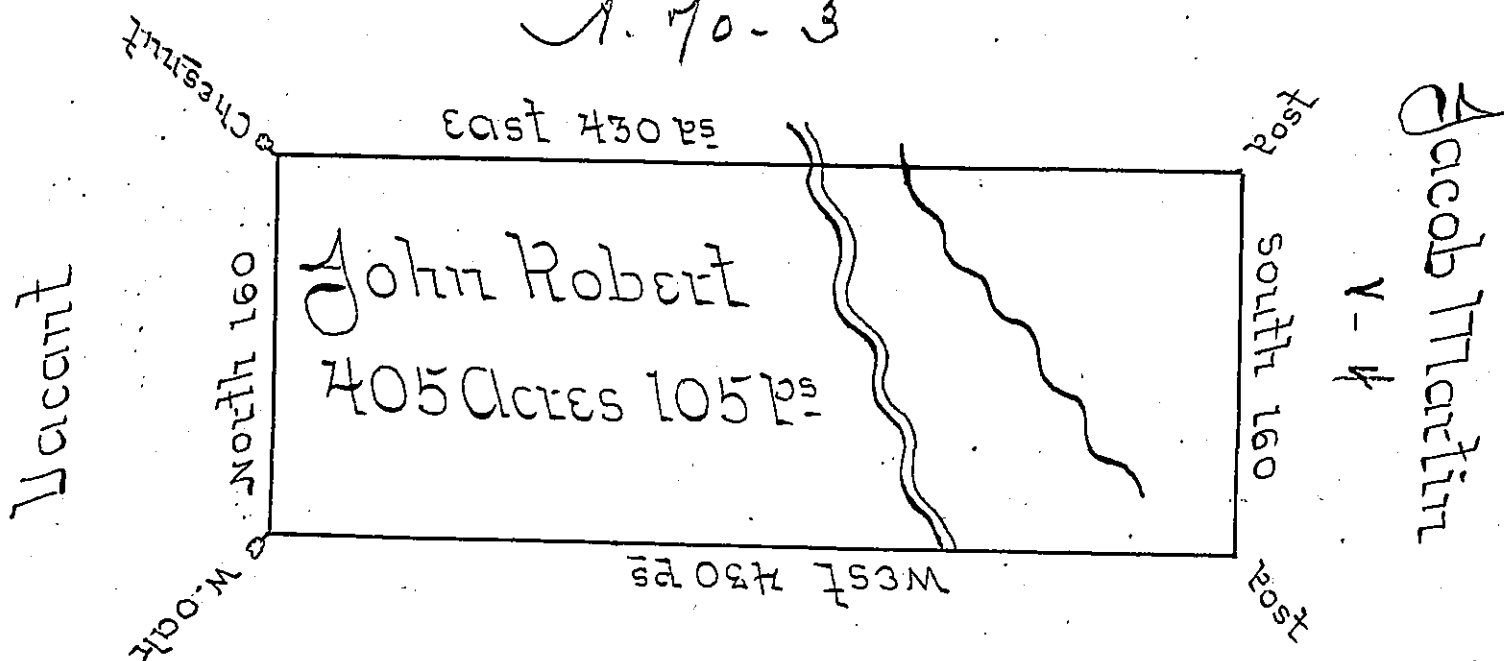


John Ewing
A. 70-3



A 81-252

John Schreiber

Situated on the Waters of Two lick Creek in Wheatfield Township Westmoreland County Contg 405 Acres & 105 perches and Allowance of six Percent for Roads &c - Surveyed the 25th day of Novemb^r 1794 on Warrant dated the 3^d day of May 1793 -

James Ross D.S.

Daniel Broadhead Esq^r S.G.

IN TESTIMONY that the above is a copy of the original remaining on file in the Department of Internal Affairs of Pennsylvania, made conformably to an Act of Assembly approved the 16th day of February, 1833, I have hereunto set my Hand and caused the Seal of said Department to be affixed at Harrisburg, this fourth day of February 1902.

James W. Latta
Secretary of Internal Affairs.